

FOR SALE/LEASE

# HEAVY MANUFACTURING FACILITY

7504 52 Street  
Edmonton, AB

**Royce Johnson**  
Senior Associate  
780 702 2950  
royce.johnson@cwedm.com

**Cushman & Wakefield Edmonton**  
Suite 2700, TD Tower  
10088 102 Avenue  
Edmonton, AB T5J 2Z1  
cwedm.com

Cushman & Wakefield Edmonton is independently owned and operated / A Member of the Cushman & Wakefield Alliance. No warranty or representation express or implied is made to the accuracy or completeness of the information contained herein, and same is submitted subject to errors, omissions, change of price, rental or other conditions, withdrawal without notice, and to any special listing conditions imposed by the property owner(s). As applicable, we make no representation as to the condition of the property for properties in question. December 19, 2024

**HEAVY POWER  
MULTIPLE CRANES**



# PROPERTY HIGHLIGHTS

- Two buildings consisting of office and warehouse for a total of 35,963 SF
- Excellent access to 50th Street, Sherwood Park Freeway, Whitemud Drive and Anthony Henday
- Yard is reinforced concrete
- Heavy power with multiple cranes
- Heated & attached quonset



**Sale Price:**  
\$5,200,000 (\$145/SF)

**Lease Rate:**  
\$9.00/SF

# PROPERTY DETAILS

**Municipal Address:**  
7504 - 52 Street

**Legal Description:**  
Plan 4795RS, Block 3, Lot 4

**Zoning:**  
IM (Medium Industrial)

**Neighbourhood:**  
Davies Industrial East

**Lease Rate:**  
\$9.00/SF

**Available:**  
35,963

**Sale Price:**  
\$5,200,000

**Taxes (2024):**  
\$124,085.46

**Building 1**  
Total 19,769 SF

**Building 2:**  
Total 16,194 SF

**Total Square Footage**  
35,963 SF

**Land Size**  
2.26 Acres



# BUILDING 1

Shop ±9,759 SF  
Office 5,005 SF  
Storage 5,005 SF  
Total 19,769 SF

**Ceiling Height:**  
21' clear

**Crane:**  
10 Ton bridge crane  
with 3-Ton & 7-Ton Hoist

**Loading:**  
Two Grade (14'W x 16'H)

**Power:**  
800 Amp, 480 Volt (TBC)

**Lighting:**  
LED & Incandescent

**Heating:**  
Radiant Tube  
Make-Up Air Unit

**Offices:**  
13 Private Offices  
Lunchroom  
Boardroom  
Open Reception Area



## BUILDING 2

Shop ±13,291 SF

Office 2,903 SF

Total 16,194 SF

### Ceiling Height:

17' Under Hook

### Crane:

10 Ton Bridge Crane

5 Ton

3 Ton

Bridge - no hoist

### Loading:

Dual Hinge Grade

13' 7" W x 14' 6" H (West)

OH Grade 16' W x 16' H (South)

OH Grade 14' W x 16' H (East)

OH Grade 14' x 14'

### Power:

1,200 Amp, 480 Volt

(TBC)

### Lighting:

LED & Incandescent

### Heating:

Radiant tube &  
forced air

### Office:

Reception

Private Offices

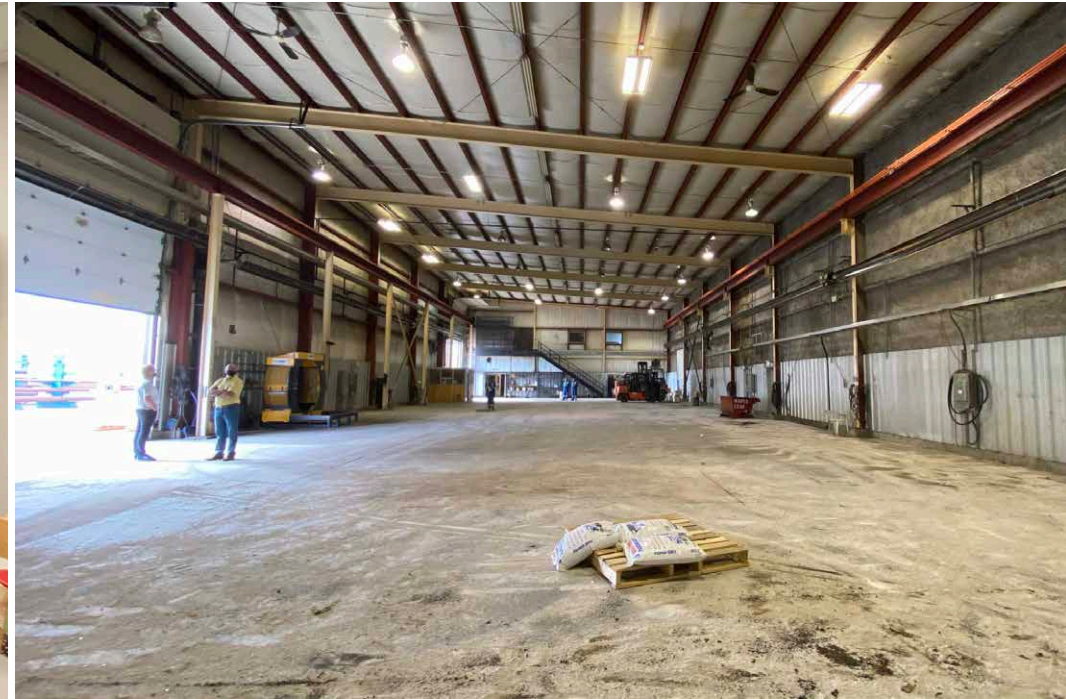
Lunchroom

### Heated Quanset

40' x 36'



# INTERIOR PHOTOS



# EXTERIOR PHOTOS



# PROPERTY PHOTOS

OFFICE



SHOP 1



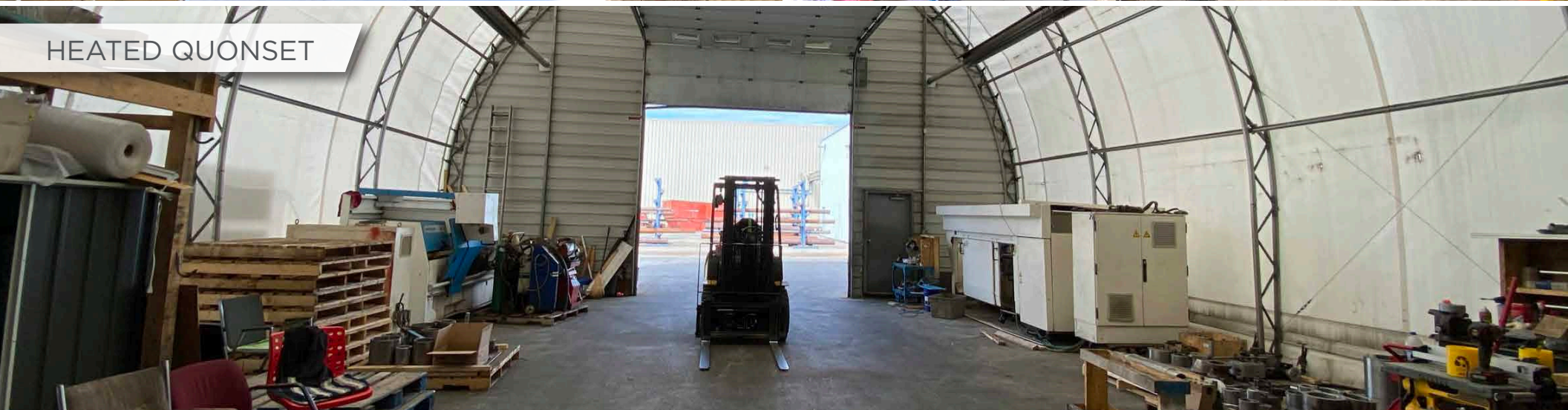
SHOP 2



SHOP 2



HEATED QUONSET



[cwedm.com](http://cwedm.com)



**Royce Johnson**  
Senior Associate  
780 702 2950  
[royce.johnson@cwedm.com](mailto:royce.johnson@cwedm.com)