

FOR SUBLEASE

BROADMOOR PLACE 1 SUBLEASE

220, 2899 Broadmoor Boulevard, Sherwood Park, AB

1,050 SF QUALITY SECOND FLOOR OFFICE SPACE FOR SUBLEASE

PROPERTY HIGHLIGHTS

- Functional office layout with 4 offices, reception, kitchenette and in-suite washroom.
- Sublease expires August 31, 2027
- Gross sublease rate options available
- Furniture is negotiable
- Excellent exposure to Broadmoor Boulevard with easy access to major roadways

Nick Mytopher

Associate

587 597 5475

nick.mytopher@cwedm.com

Will Harvie

Associate Partner

780 902 4278

will.harvie@cwedm.com

Kurt Paull, SIOR

Partner

780 702 4258

kurt.paull@cwedm.com

Max McPeak

Associate

780 700 5038

max.mcpeak@cwedm.com

**CUSHMAN & WAKEFIELD
Edmonton**

Suite 2700, TD Tower
10088 - 102 Avenue
Edmonton, AB T5J 2Z1
www.cwedm.com

AERIAL

YELLOWHEAD TRAIL

STRATHMOOR DRIVE

PEMBINA ROAD

BROADMOOR BLVD

SITE

IDEAL USERS



STARTUP COMPANIES



FINANCIAL/IT



ENGINEERING

PROPERTY DETAILS

Municipal Address: #220, 2899 Broadmoor Blvd,
Sherwood Park, AB

Parking: Surface Stalls

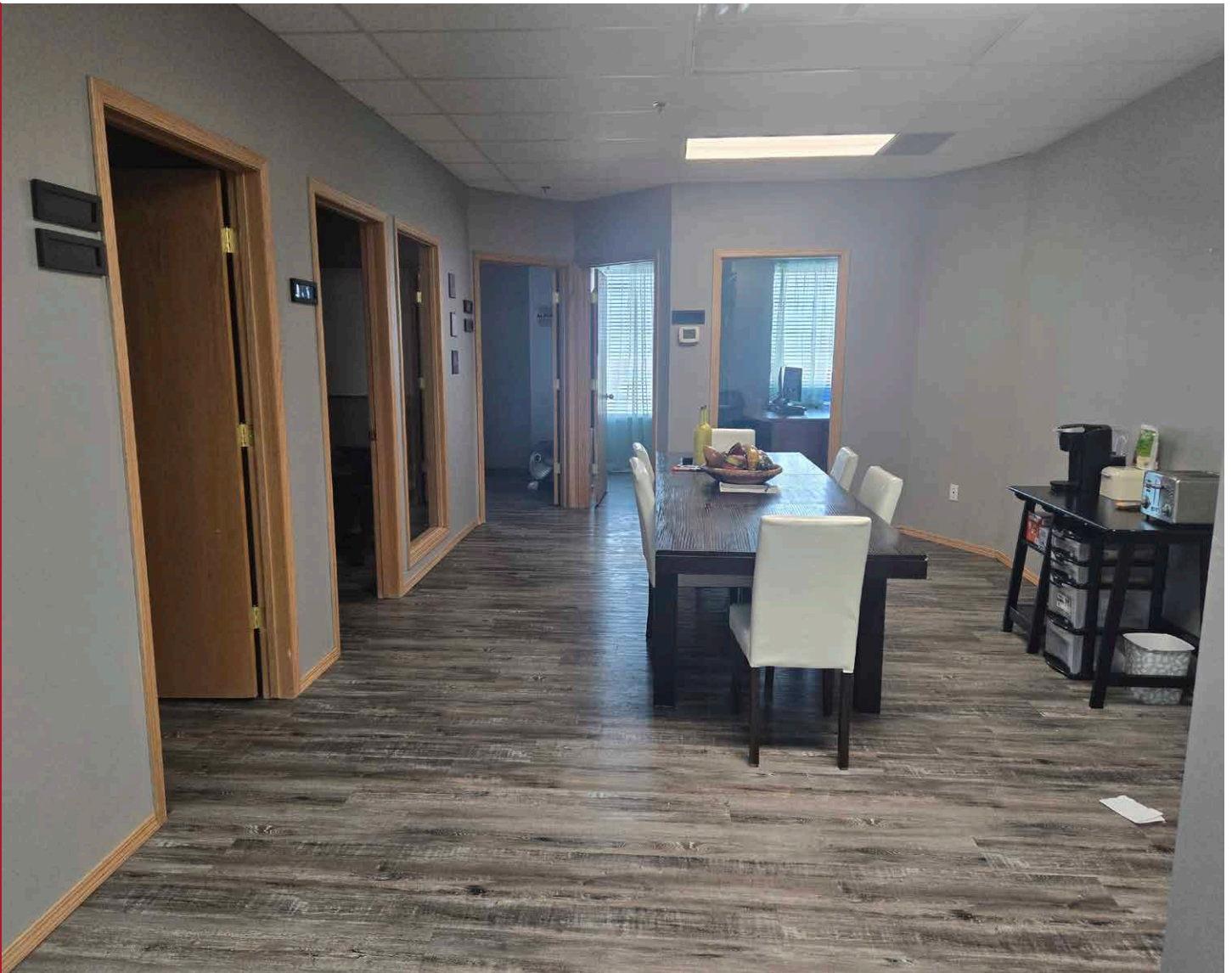
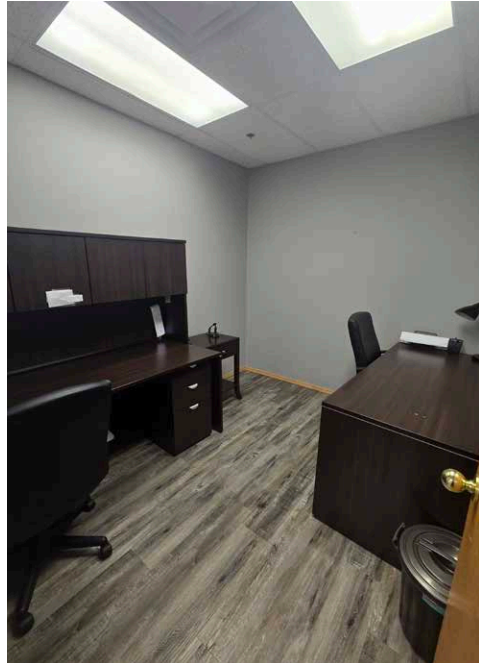
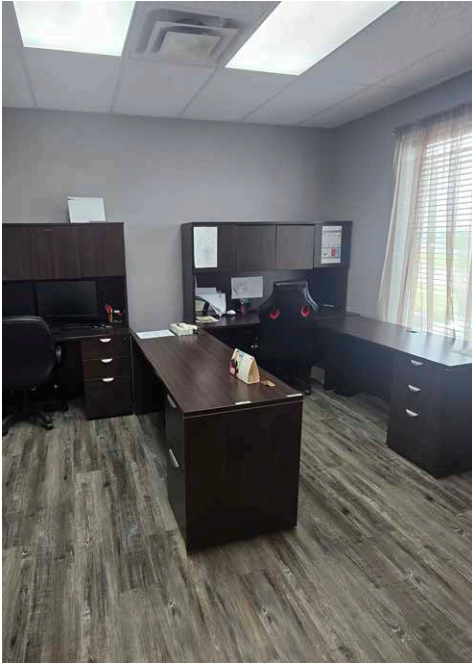
Sublease Expiry: August 31, 2027

Available Area: 1,050 SF

Asking Rent: Market

Signage: Available

PHOTOS OF OFFICE





**CUSHMAN &
WAKEFIELD**
Edmonton

Nick Mytopher

Associate

587 597 5475

nick.mytopher@cwedm.com

Will Harvie

Associate Partner

780 902 4278

will.harvie@cwedm.com

Kurt Paull, SIOR

Partner

780 702 4258

kurt.paull@cwedm.com

Max McPeak

Associate

780 700 5038

max.mcpeak@cwedm.com