



**CUSHMAN &  
WAKEFIELD**  
Edmonton

FOR SALE

# STURGEON COUNTY LAND

55010 Rand Road 233,  
Sturgeon County, AB

## STURGEON COUNTY LAND

### PROPERTY HIGHLIGHTS

- 78.46 Acres Agricultural Land
- 3,520 SF Warehouse
- 2,400 SF Equipment Shed

**CUSHMAN & WAKEFIELD**  
Edmonton  
Suite 2700, TD Tower  
10088 - 102 Avenue  
Edmonton, AB T5J 2Z1  
[www.cwedm.com](http://www.cwedm.com)

**Mark Bowman**  
Associate  
780 702 4256  
[mark.bowman@cwedm.com](mailto:mark.bowman@cwedm.com)

**Zeshan Qureshi CPA, CA**  
Partner  
780 238 4576  
[zeshan.qureshi@cwedm.com](mailto:zeshan.qureshi@cwedm.com)

**Jack Norris**  
Associate  
587 635 1897  
[jack.norris@cwedm.com](mailto:jack.norris@cwedm.com)

Cushman & Wakefield Edmonton is independently owned and operated / A Member of the Cushman & Wakefield Alliance. No warranty or representation, express or implied, is made to the accuracy or completeness of the information contained herein, and same is submitted subject to errors, omissions, change of price, rental or other conditions, withdrawal without notice, and to any special listing conditions imposed by the property owner(s). As applicable, we make no representation as to the condition of the property (or properties) in question. September 09, 2024.



# PROPERTY DETAILS

**Municipal Address:** 55010 Rand Road 233,  
Sturgeon County, AB

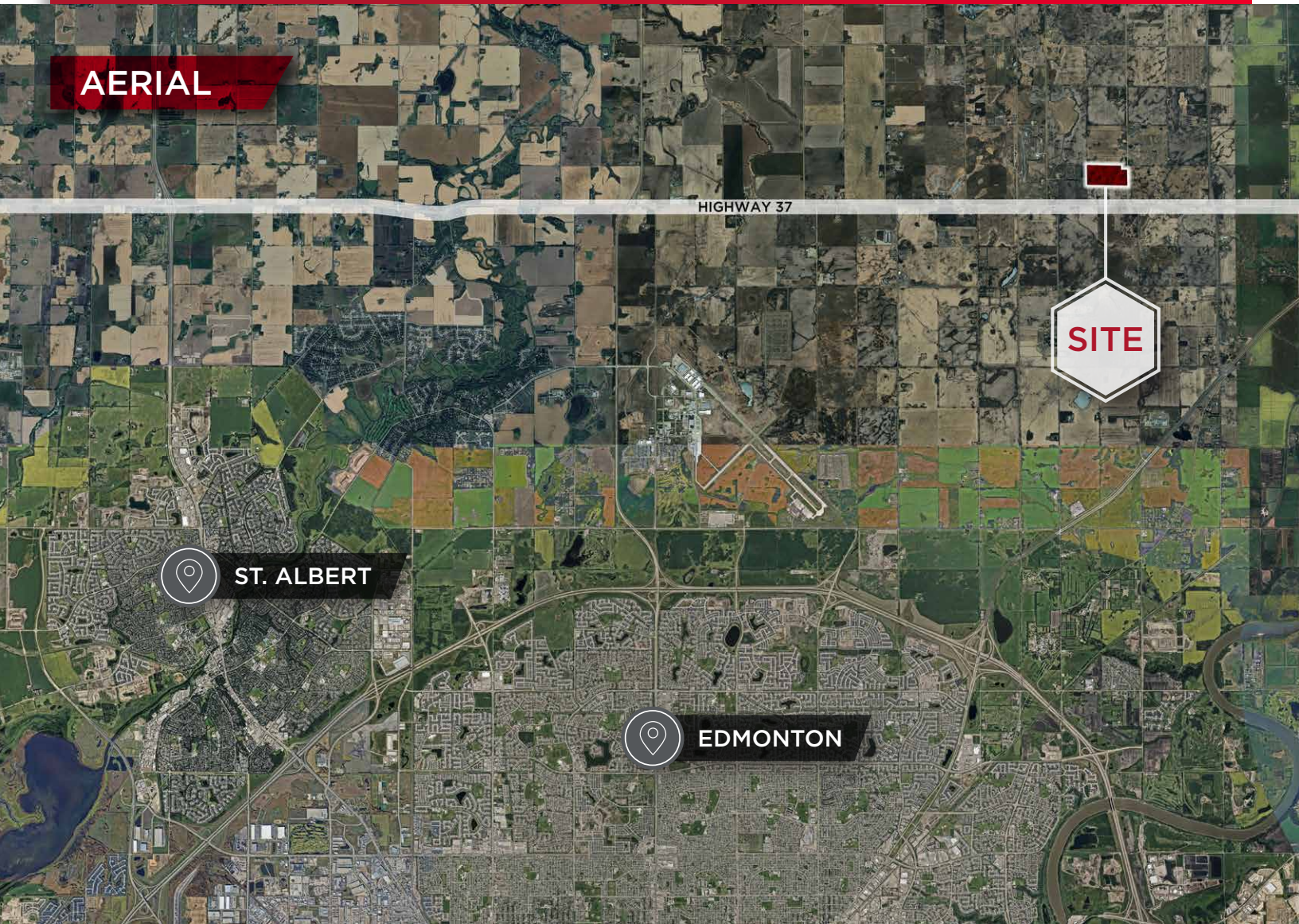
**Zoning:** Agricultural

**Legal Description:** Plan: 0022797, Lot 3

**Asking Price:** \$800,000

**Site Size:** 78.46 Acres

**AERIAL**



**Mark Bowman**  
Associate  
780 702 4256  
[mark.bowman@cwedm.com](mailto:mark.bowman@cwedm.com)

**Zeshan Qureshi CPA, CA**  
Partner  
780 238 4576  
[zeshan.qureshi@cwedm.com](mailto:zeshan.qureshi@cwedm.com)

**Jack Norris**  
Associate  
587 635 1897  
[jack.norris@cwedm.com](mailto:jack.norris@cwedm.com)