

FOR SALE

JASPER GARDENS RA8 DEVELOPMENT SITE

10041 - 153 STREET,
EDMONTON AB

OPPORTUNITY FOR 55 - 60
RESIDENTIAL UNITS &
MAIN FLOOR COMMERCIAL



CUSHMAN &
WAKEFIELD
Edmonton

EXCELLENT PROXIMITY TO
WEST LRT LINE

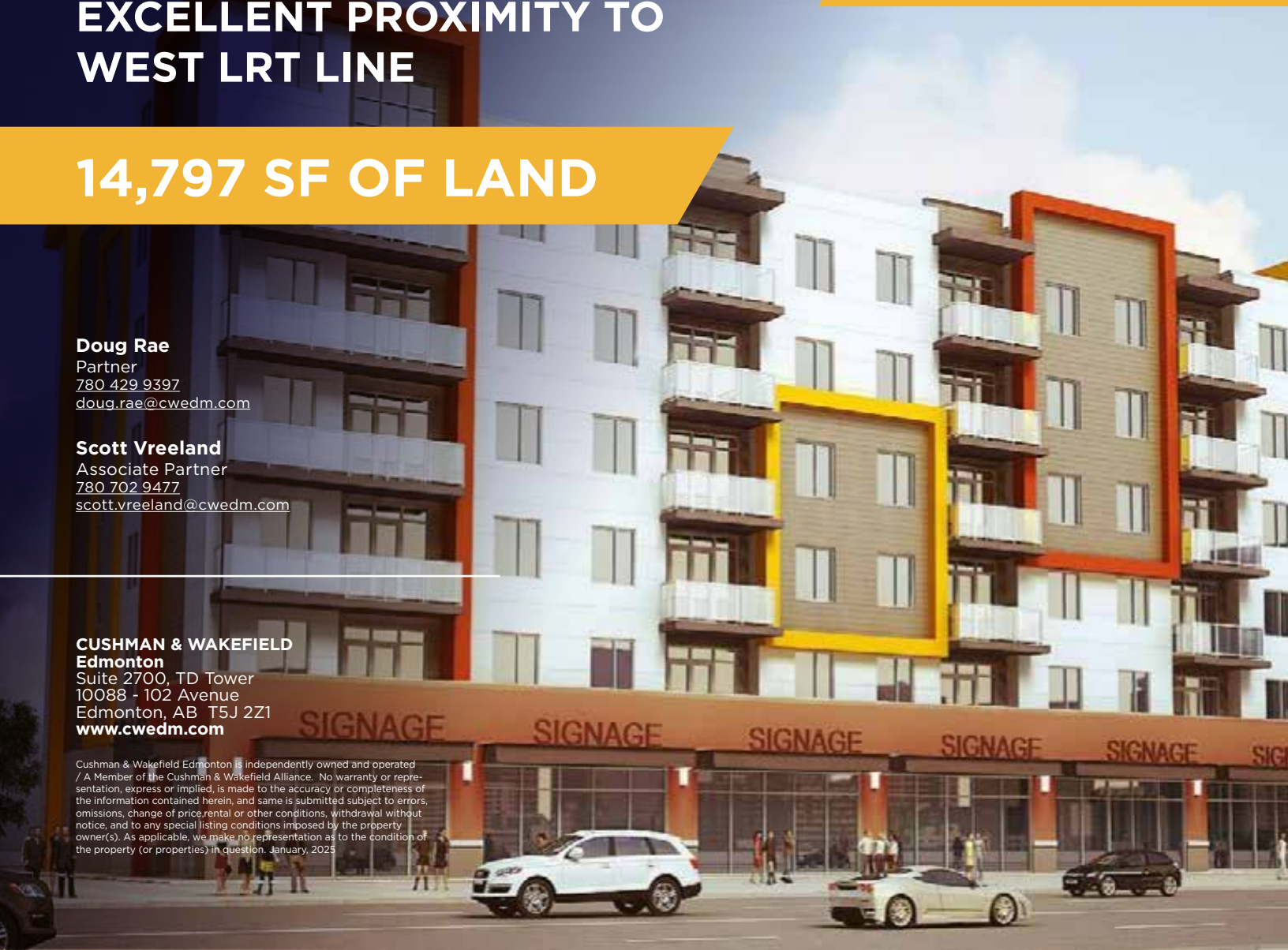
14,797 SF OF LAND

Doug Rae
Partner
780 429 9397
doug.rae@cwedm.com

Scott Vreeland
Associate Partner
780 702 9477
scott.vreeland@cwedm.com

CUSHMAN & WAKEFIELD
Edmonton
Suite 2700, TD Tower
10088 - 102 Avenue
Edmonton, AB T5J 2Z1
www.cwedm.com

Cushman & Wakefield Edmonton is independently owned and operated / A Member of the Cushman & Wakefield Alliance. No warranty or representation, express or implied, is made to the accuracy or completeness of the information contained herein, and same is submitted subject to errors, omissions, change of price/rental or other conditions, withdrawal without notice, and to any special listing conditions imposed by the property owner(s). As applicable, we make no representation as to the condition of the property (or properties) in question. January, 2023



FOR SALE

JASPER GARDENS RA8 DEVELOPMENT SITE

DEVELOPMENT POTENTIAL

- Zoned for multi-family development, with the capacity to build up to 55 - 60 residential units and main floor commercial, offering significant density and flexibility for developers.

Prime Corner Site:

- Located on a unique corner lot, providing excellent visibility and accessibility. Proximity to Stony Plain Road enhances its desirability for both residential and commercial uses.

Transit-Oriented Location:

- Located just 500 meters from the future Valley Line West LRT Station, ensuring seamless connectivity to Edmonton's expanding public transit network. This feature is ideal for attracting urban professionals and commuters.

Retail and Lifestyle Convenience:

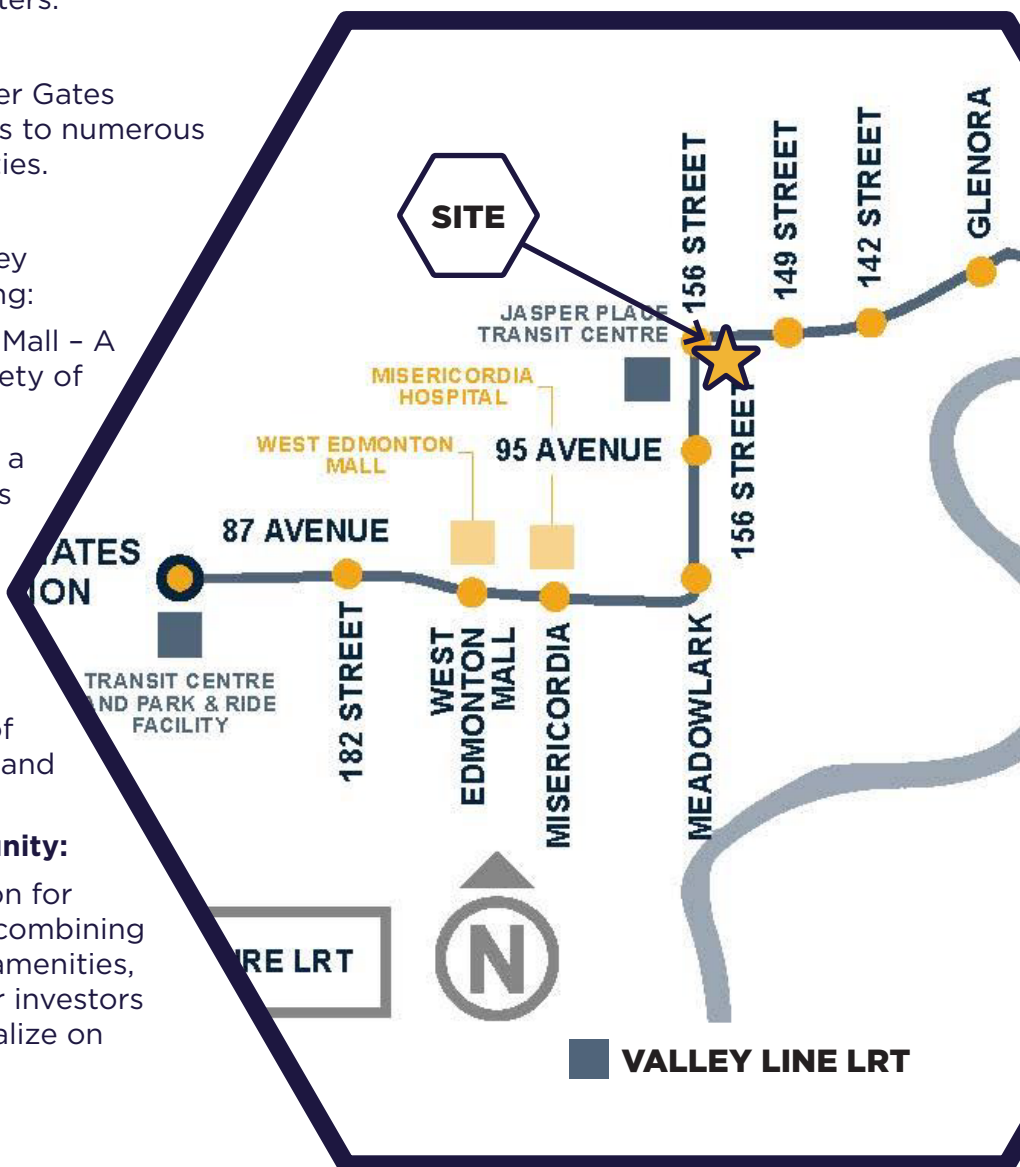
- Within walking distance to Jasper Gates Shopping Centre, offering access to numerous retail, dining, and service amenities.

Nearby Major Destinations:

- Less than a 10-minute drive to key attractions and services, including:
 - » Mayfield Common Shopping Mall - A popular retail hub with a variety of stores.
 - » West Point Centre - Offering a range of professional services and retail options.
 - » Misericordia Community Hospital - A major healthcare facility in Edmonton.
 - » West Edmonton Mall - One of the world's largest shopping and entertainment destinations.

Exceptional Development Opportunity:

- A rare offering in West Edmonton for multi-family development land, combining excellent location, proximity to amenities, and transit accessibility. Ideal for investors and developers looking to capitalize on Edmonton's growth.



FOR SALE

JASPER GARDENS RA8 DEVELOPMENT SITE

PROPERTY DETAILS

Municipal Address:
10041 - 153 Street

Legal Description:
Plan 8475AH, Blk 39, Lot 19,20

Zoning:
RA8 (Medium Rise Apartment Zone)

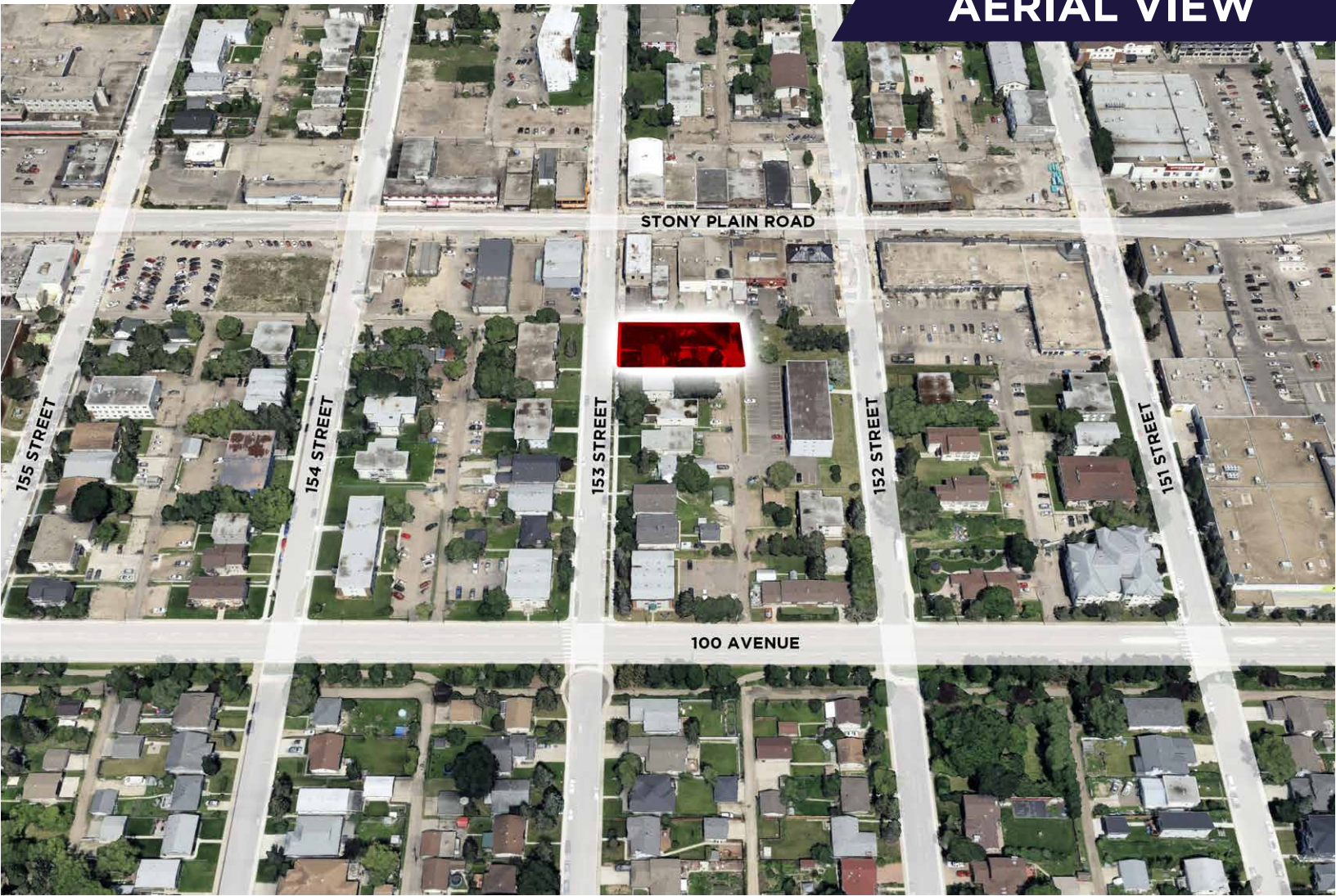
Neighbourhood:
West Jasper Place

Property Taxes (2024):
\$4,495.93

Description:
2 Lots, 1 bare land & 1 existing double unit residential home with triple car garage
**Existing monthly income of \$2,800 per month on property*

Lot Area:
14,797 SF

ASKING PRICE:
\$1,160,000



AERIAL VIEW



**CUSHMAN &
WAKEFIELD**
Edmonton



Doug Rae
Partner
780 429 9397
doug.rae@cwedm.com

Scott Vreeland
Associate Partner
780 702 9477
scott.vreeland@cwedm.com

CUSHMAN & WAKEFIELD
Edmonton
Suite 2700, TD Tower
10088 - 102 Avenue
Edmonton, AB T5J 2Z1
www.cwedm.com